

W1-W5 INSTALLED AT AXIOM

| WIRING CHART | |
|--------------|----------------|
| W1 | JP9-2 TO JP9-3 |
| W2 | JP7-2 TO JP7-3 |
| W3 | JP1-1 TO JP1-2 |
| W4 | JP2-1 TO JP2-2 |
| W5 | JP8-2 TO JP8-3 |

4.30

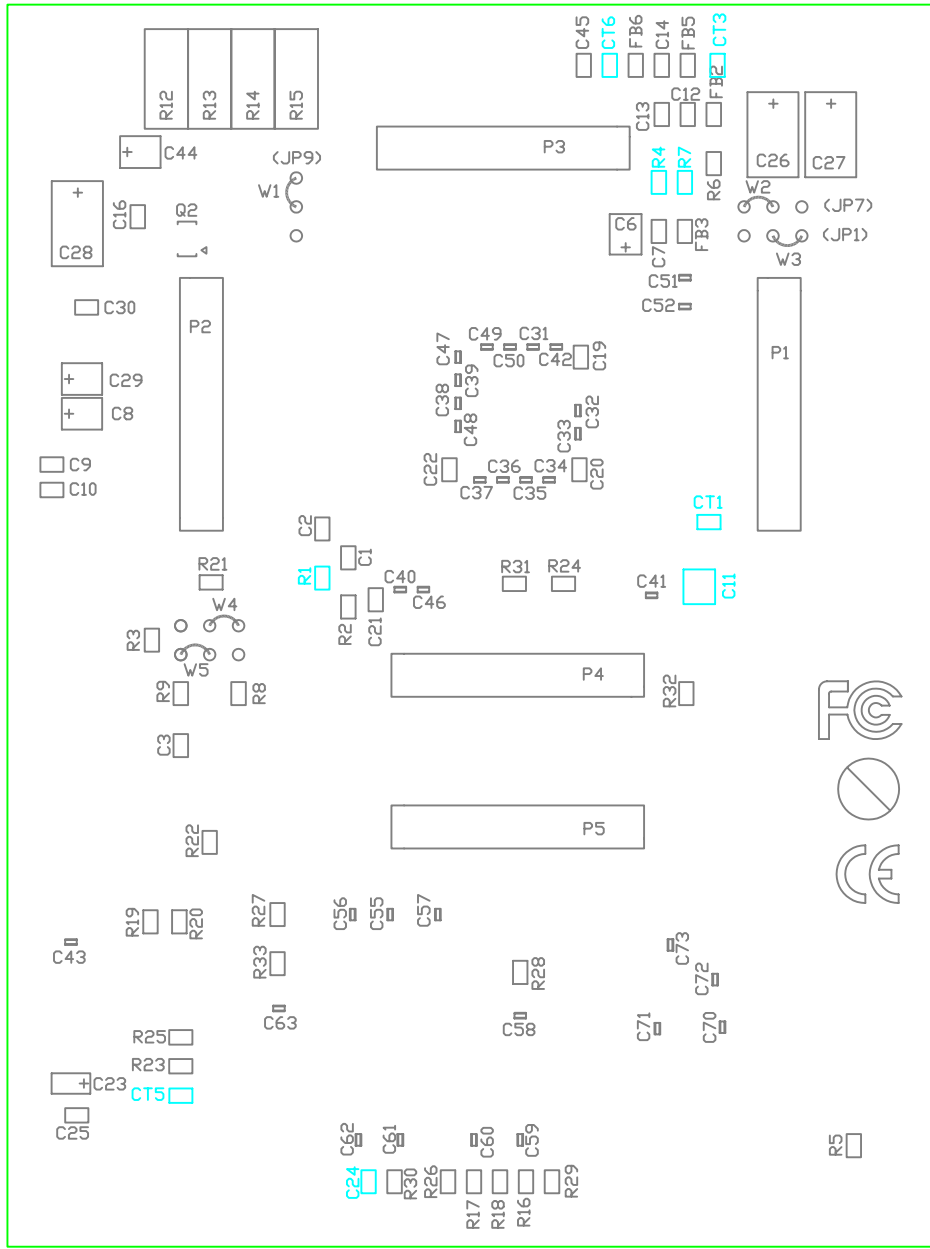
4

3

2

1

0



BOTTOM ASSY
 MPC567XADAT516 (MAMBA DAUGHTER CARD) AXM-0472 REV D
 AXIOM MANUFACTURING

3

2

1

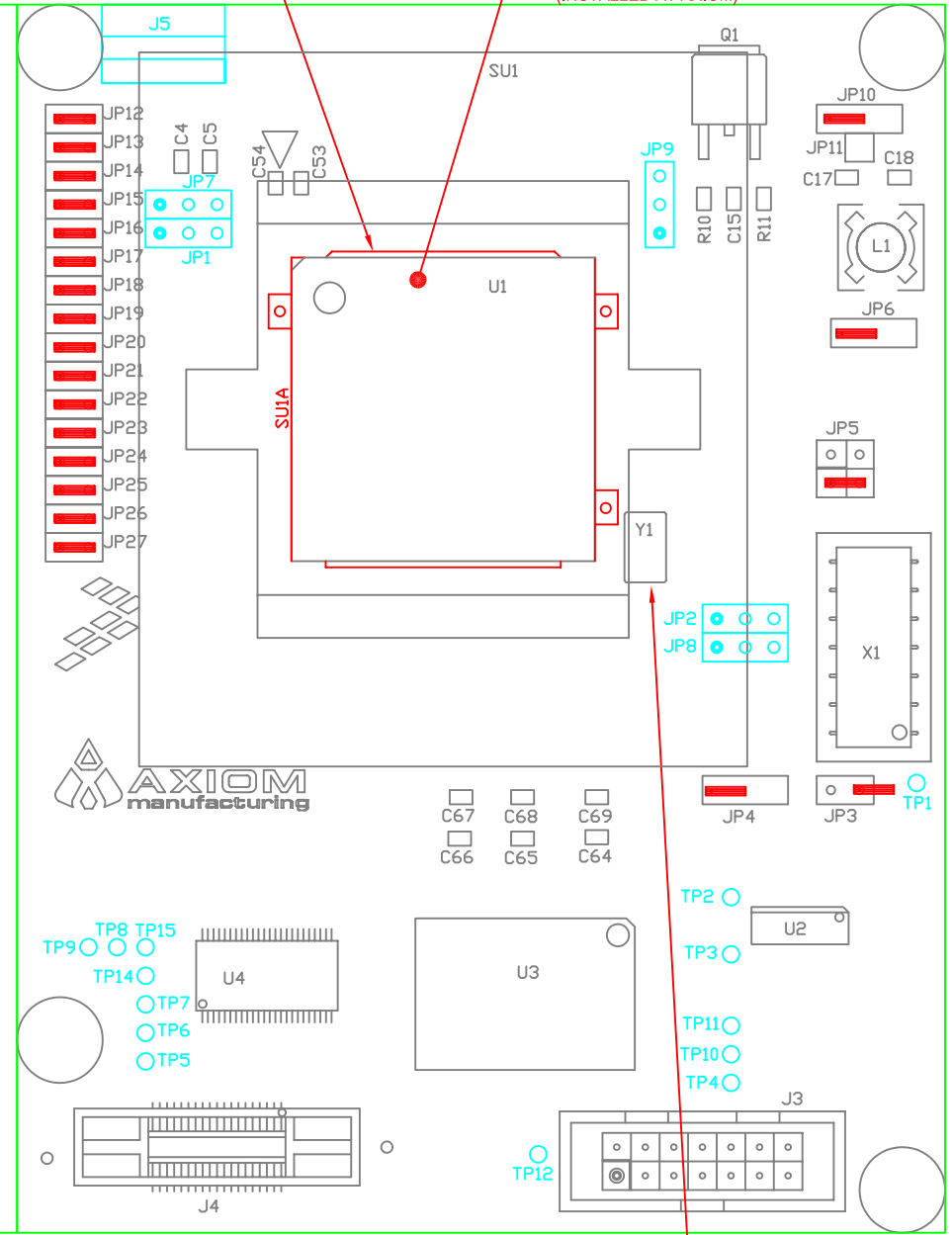
DOC-0472-060 REV D1

— = SHUNT (GREEN SHUNTS MOVED FOR SHIP)

SHUNTS POSITIONED AS BUILT FROM PCB ASSEMBLER
 BLUE COMPONENTS ARE DNI

SOLDER SU1A, BGA RCVR, TO PCB (ORIENT AS SHOWN, WITH SINGLE TAB IN UPPER LEFT)

INSTALL U1 (BGA516) INTO SU1
 INSTALL SU1 (BGA SKT) INTO SU1A (IC RCVR)
 ORIENT U1, SU1 AS SHOWN
 (INSTALLED AT AXIOM)



TOP ASSY
 MPC567XADAT516 (MAMBA DAUGHTER CARD) AXM-0472 REV D
 AXIOM MANUFACTURING

APPROVED: SR,12/10/10

Y1 INSTALLED AT AXIOM

0

1

2

3

3.25