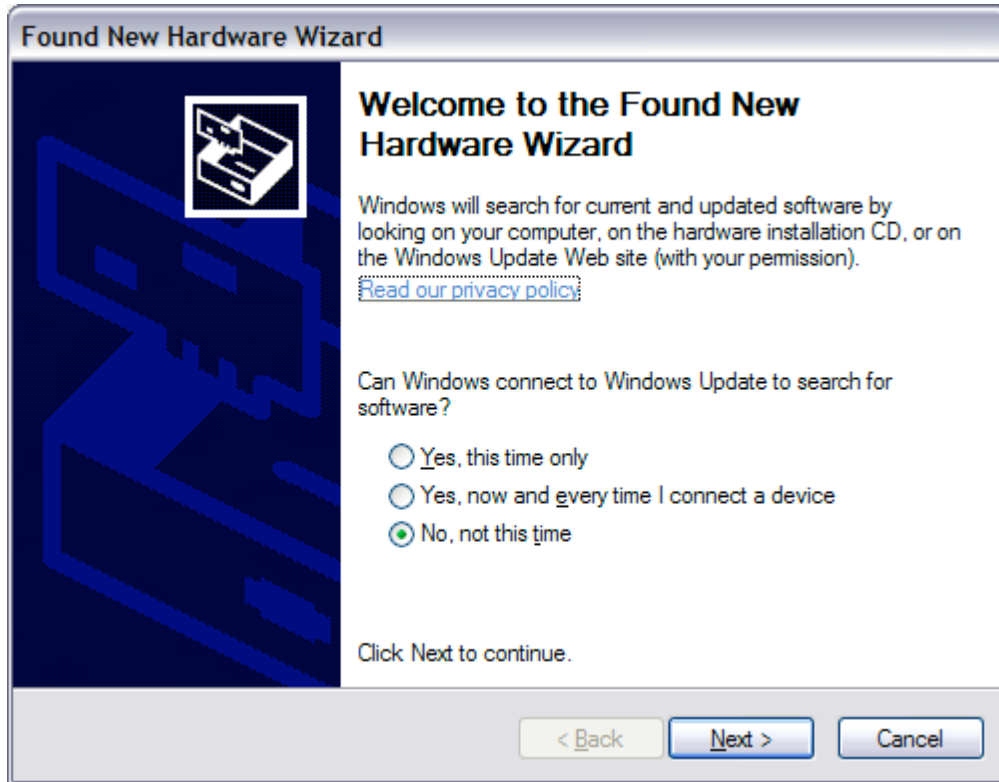
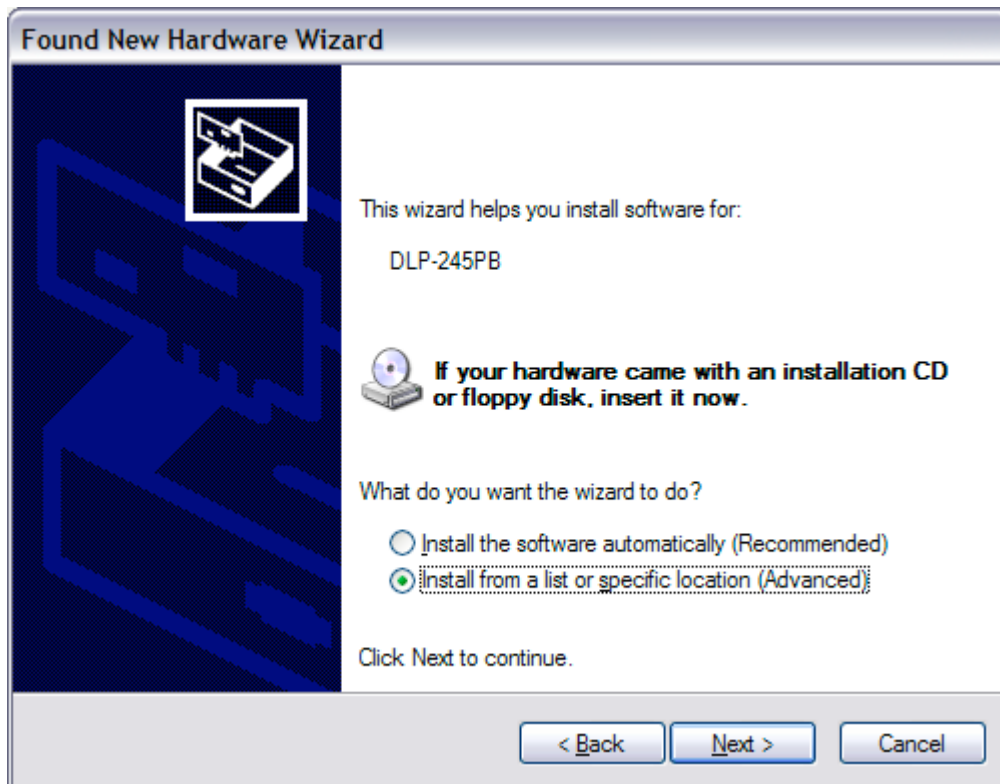


USB BDM driver installation procedure

1. Do not connect the USB cable to the BDM until you install the software first. If you do not apply the default installation path, remember the folder where you install the software.
2. Connect USB BDM to computer USB port. Found New Hardware Wizard dialog will appear.

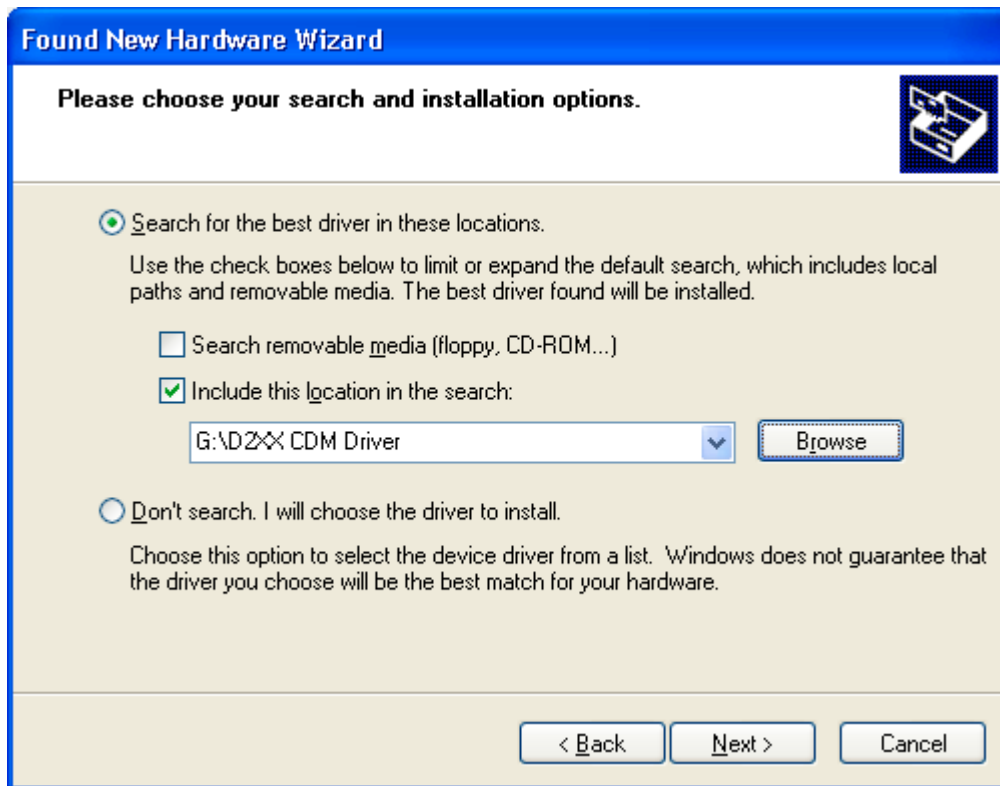


3. Select **No, not this time** option, then click **Next** button to go to the next dialog.



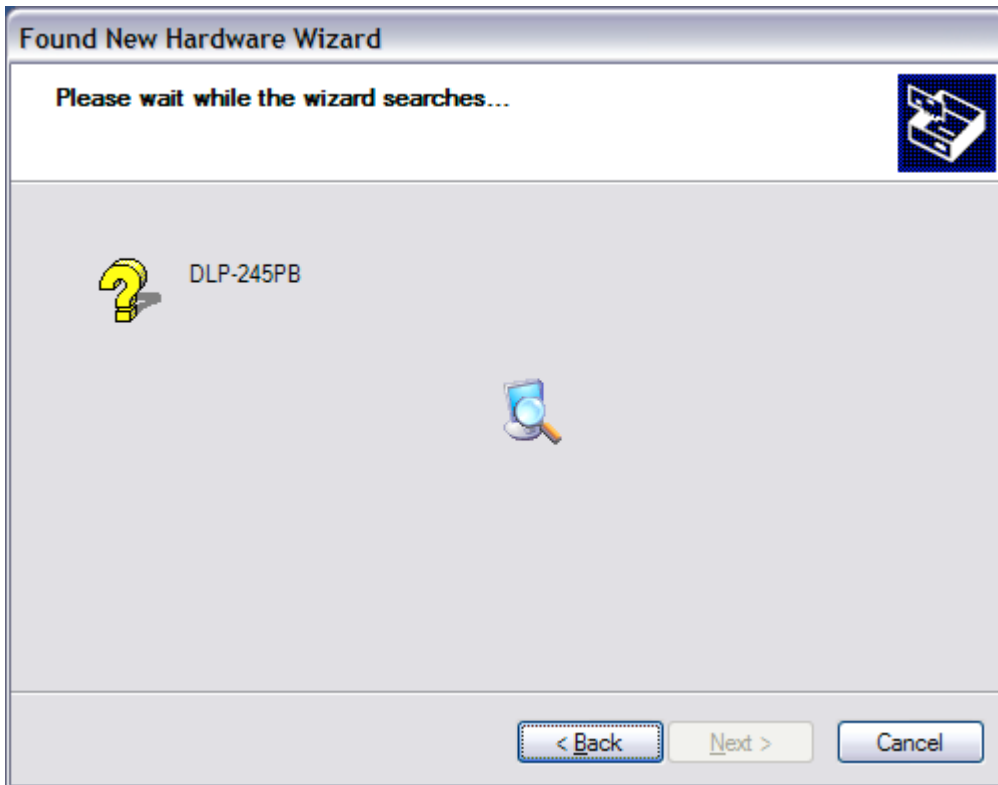
4. Select **Install from a list or specific location (Advanced)** option. Then click **Next** button to go to next dialog.

5. Check **Include this location in the search**. Then click the **Browse** button. In the file dialog, select the software installation directory C:\Program Files\USB BDM12, or the directory folder that the software was installed to. Click **Next** button.



Note the screen shot does not have a valid path shown.

6. Windows will search the device with the following dialog:

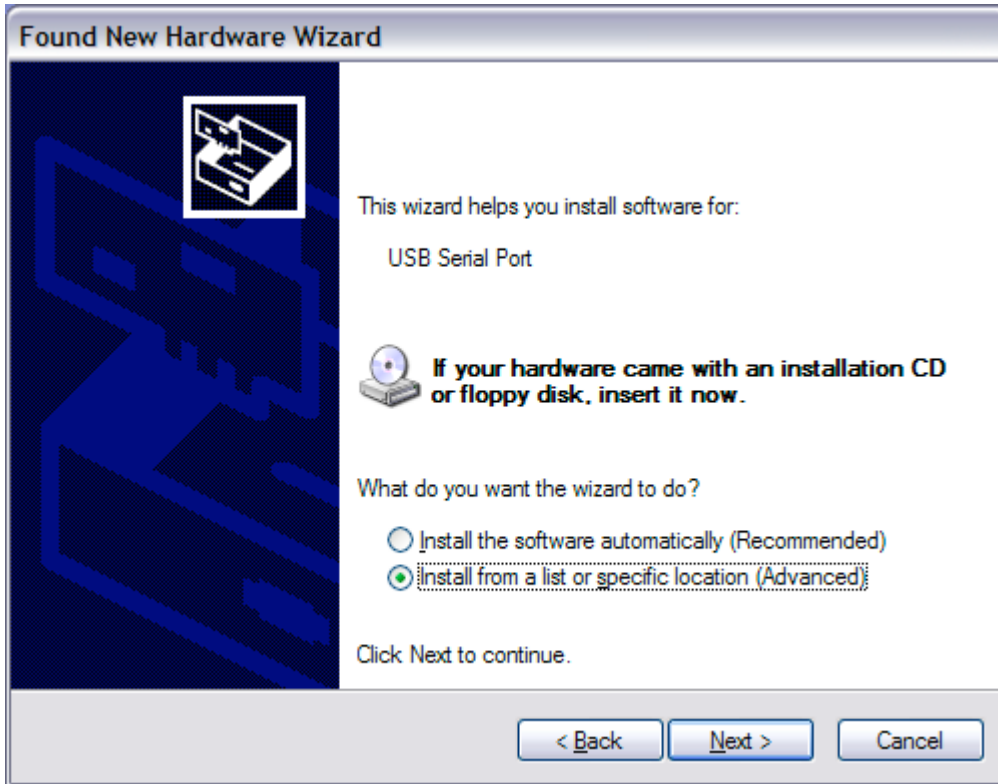


7. After the search, Windows shows the next dialog:



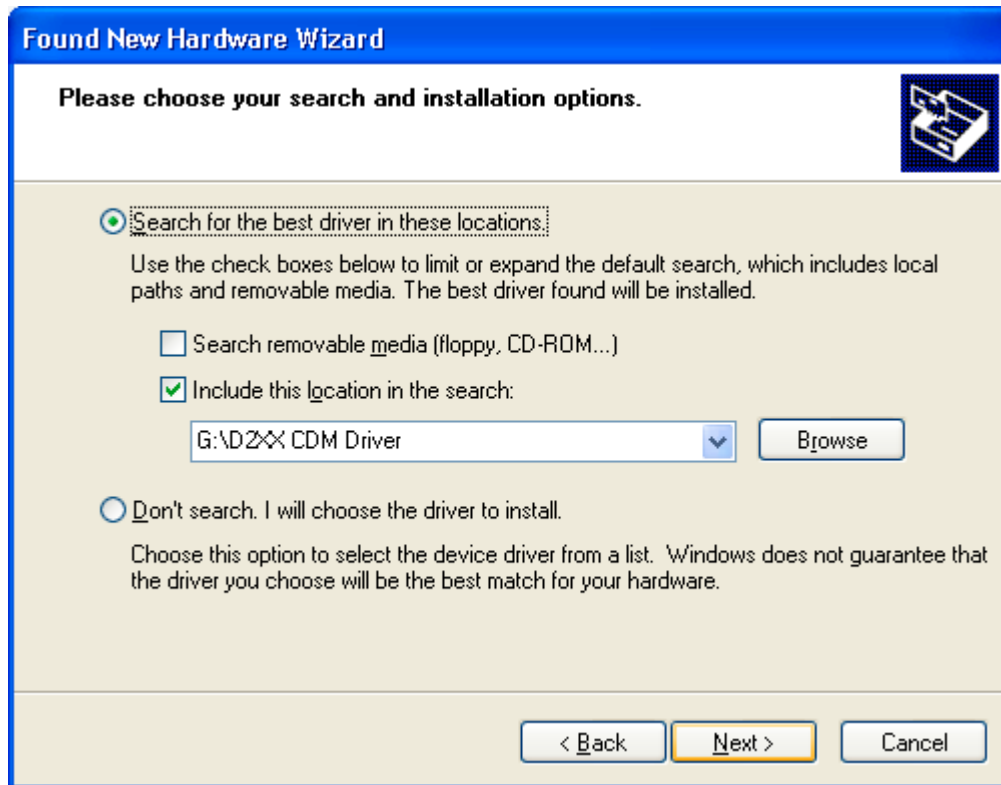
8. Note that the hardware shown in the dialog is USB Serial Converter. Click **Continue Anyway** button. Windows will copy the necessary files.

9. After files are copied, Windows will show the Found New Hardware Wizard again. But it is a USB serial port this time.



10. Again, select **Install from a list or specific location (Advanced)**. Then click **Next** button to go to next dialog.

11. Select the same software installation folder location as last time for this install.



Note the screen shot does not show a valid path to the software.

12. Click **Next** button to go to next dialog.



13. Note that the hardware shown is USB Serial Port. Click **Continue Anyway** button to install the driver.

14. After some files are copied, Windows will show that the driver is successfully installed.

15. If Windows asks to restart for the install to take effect, restart Windows.